

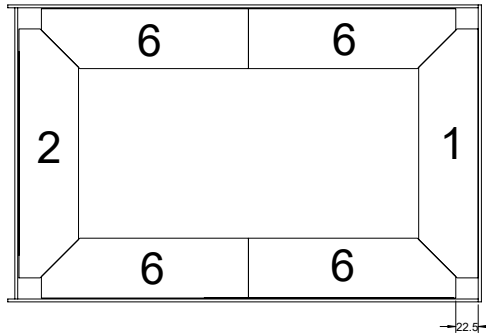
Dwg. KG4.4.12.20

Model KG4 B

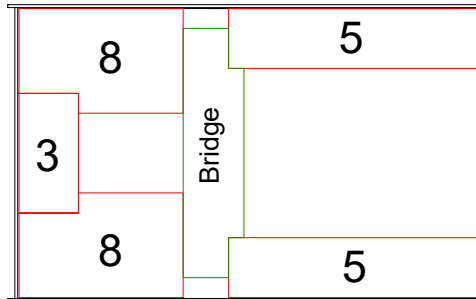
Version 1.2

13 Dec 2017

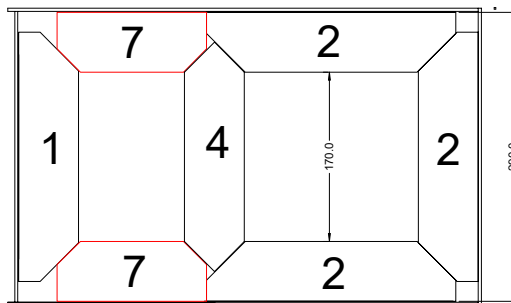
C Pemberton-Pigott



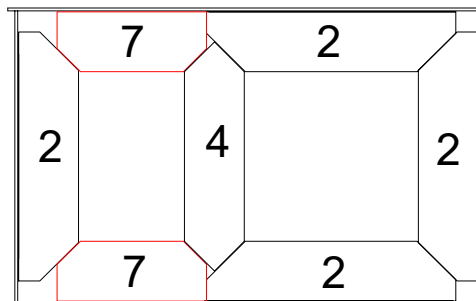
Bottom Row



Second Row



Third Row



Other Rows

## BRICK INSTALLATION

Note: The back of the chamber is welded on after the bricks are installed.

This ensures the bricks fit exactly and easily.

Push the bricks forward using the back plate then weld it into position.

Use a pre-cut bar of appropriate length propped against the end wall to push the plate towards the bricks.